

Ambassador Double Door "Pass Through" Autoclave

Specifications for an Ambassador 158 DE

Design Features

- 158 litres
- Double Door "pass-through" model
- MP25 Controller
- Robust space saving design
- Integral drip tray
- Grade 316 stainless steel chamber
- Anti door bolt over tight mechanism
- Complete versatility for almost any application

Optional Accessories

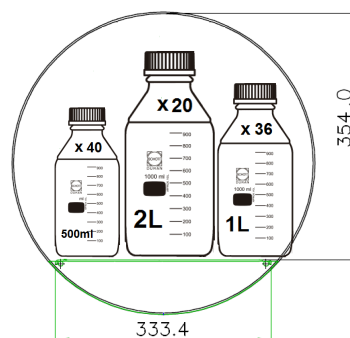
- † Loading Baskets
- † Waste Discard System
- † Fan Assisted High Speed Cooling
- † Condense Collector, which eliminates a drain requirement.
- † Air removal HEPA filter (for CAT3 environments)
- † Data Printers & Chart Recorders
- † Vacuum & Drying options
- † Anti Lime scale system
- Loading Trolley



Capacities and dimensions (approx)	
Model	Ambassador 158
Autoclave Weight	255kg
Export Case Size	760w x 1590h x 1410d
Overall Dimensions	650w x 1240h x 1319d
Chamber Dimensions	460 Ø x 960d
Chamber Capacity	150 Litres
Water Consumption (in chamber / typical per cycle)	500ml
Water Consumption (Steam generator / typical per cycle)	10 litres
1L Media Bottles	36
2L Media Bottles	20
500ml Media Bottles	40
Basket Dimensions (x2)	H270xW360xL480
Basket Dimensions (single Basket)	N/A
NHS Discard Boxes	H250xW320xL320 (3)
Waste Discard Dimensions	H270xW360xL480 (2)
Trolley	H671xW380xL1200



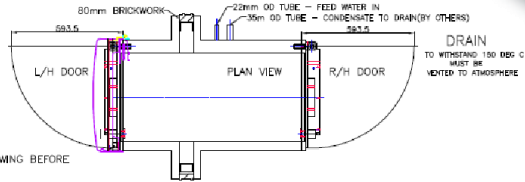
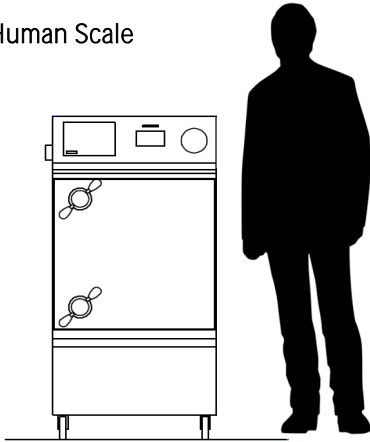
Ambassador 158



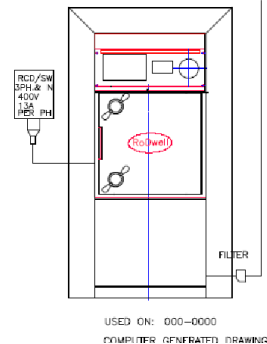
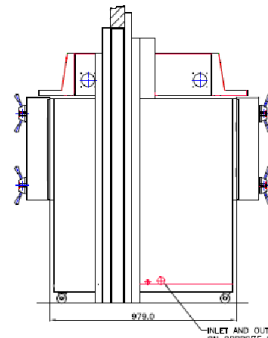
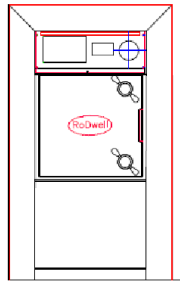
Not to scale

The Rodwell Autoclave Company

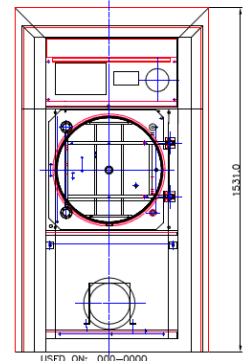
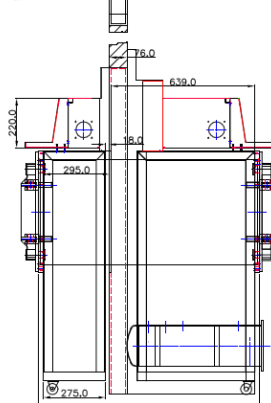
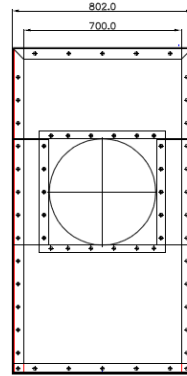
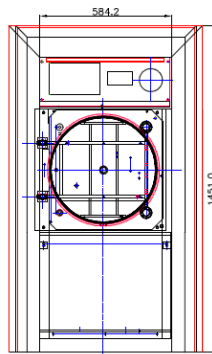
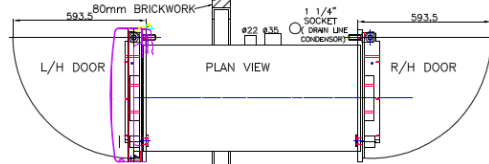
Human Scale



APPROVAL REQUIRED OF THIS DRAWING BEFORE MANUFACTURING CAN COMMENCE
 1) CONFIRMATION OF WALL THICKNESS
 2) HANDING OF DOOR ON EACH SIDE AS SHOWN



APPROVAL REQUIRED OF THIS DRAWING BEFORE MANUFACTURING CAN COMMENCE
 1) CONFIRMATION OF WALL THICKNESS
 2) HANDING OF DOOR ON EACH SIDE AS SHOWN



Safe Design Operating Limits

Model	Ambassador 158
Max working temperature	138 °C
Min working temperature	7 °C
Max ambient temperature	28 °C
Min ambient temperature	11 °C
Max hydraulic pressure	4.14 Bar
Max working pressure	2.62 Bar
Max working vacuum	Minus 1 Bar

Site Requirements (E Version)

Electrical site requirement: 16 Amp Type C MCB required

Model	Ambassador 158E
Drain Requirements	150°C 35mmØ Copper
Voltage	415v
Phase Requirement	3ph/N 50/60 Hz
Power Consumption	9kw
Fuse Rating	16 amp

Site Requirements (DS Version)

Electrical site requirement: Switched RCD required

Model	Ambassador 158DS
Drain Requirements	150°C 35mmØ Copper
Mains Steam Supply	35 lb p/h @ 2.67 Bar
Voltage	230v
Phase Requirement	1ph/N 50/60 Hz
Power Consumption	1kw
Fuse Rating	5amp

Option Requirements

- Air Supply at 38 psi, 7 cfm required for Air Ballasting option
- Post Cycle Drying will require AC701C vacuum option.
- Drain requirement of 150°C, 35Ømm copper pipe at floor level.

General Requirements

- †Sodium Chloride must not exceed a level greater than 500 ppm.
- †Use regular mains water only. DO NOT USE distilled or RO water
- DS Version requires a mains steam supply of 38psi 9kw 35lbs/hour

Complying Standards

- PED Cat 2 Module B+D Notified Body: British Engineering No. 0040
- Harmonised Standards applied: EMC BS EN 61326
- Community directives applied : Pressure Equipment Directive – PED 2014/68/EU (formerly PED 97/23/EC)
- Designed in accordance with PD5500 (formerly BS5500) & BS2646
- Chamber and Door constructed of stainless steel BS-EN 10028-7:316
- ISO 9001: 2008

Information is subject to change to suit different options added. This information is correct as of 6th September 2017.