



COMPOSITE AUTOCLAVES -DWELL 280 Pro

Design Features

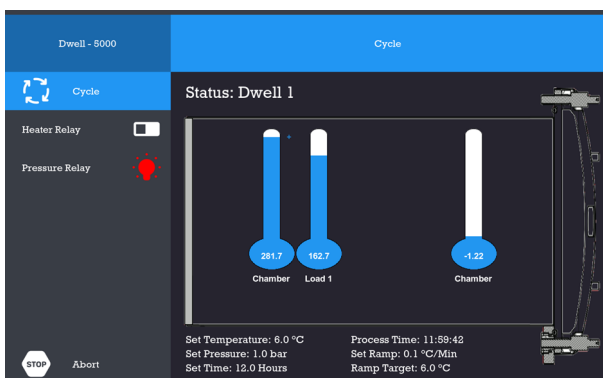
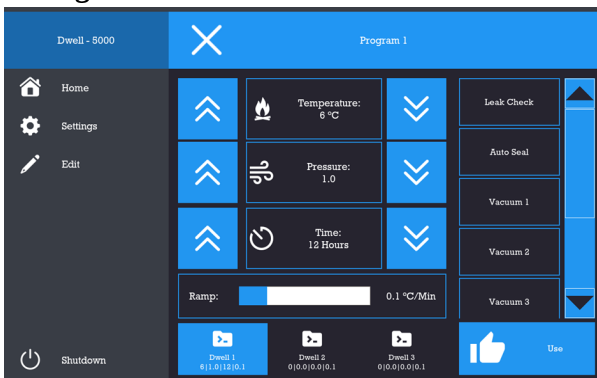
- Exceptionally Competitively Price
- Externally Lagged 316 Stainless Steel Chamber for maximum space & highest thermal efficiency
- Thermal Mass Stability, derived from scientific control essential for delicate tooling
- Simple Plug & Play Design
- Smartlog data Logging with auto-send function
- Easy to use IPT (Intelligent Process TouchscreenControl)
- Suitable for small to medium size facilities as a work-horse autoclave and large organisations for efficient processing of smaller items
- Simple yet effective design & bolt closure.
- Established After Sales Care Network
- Continuous Vacuum for assured Consolidation with up to 4 independent ports, all alarmed for any Vac Leak
- Simple Reliable Bolt Closure System
- Chamber & Load sensors for accurate process control & cross-referencing
- Completely programmable temperature, pressure & dwell with 5 possible memory sets
- Program Interrupt Possible
- Caster Mounted for ease of positioning, installation and portability

Options

- Built-in self contained Hydrovane Compressor
- Dual Mains air fed with automatic compressor back up should mains air fail
- Re-Usable Ramped Packing Case for efficient relocate-ability (Racing Teams)



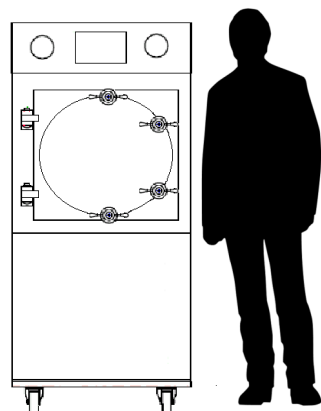
Intelligent Touch screen Process Controller



Capacities and dimensions		
Model	Dwell 280	(with compressor)
Autoclave Weight	450 KG	520 KG
Packed Weight	600 KG	670 KG
Export Case Size	1000w x 1970h x 1800d	
Overall Dimensions	830w x 1800h x 1500d	
Chamber Dimensions	545 dia x 1200d	
Chamber Volume	280 litre	
Door Swing	700	
Shelf Width	450	
Maximum Width	540	
Usable Height	410	



Human Scale



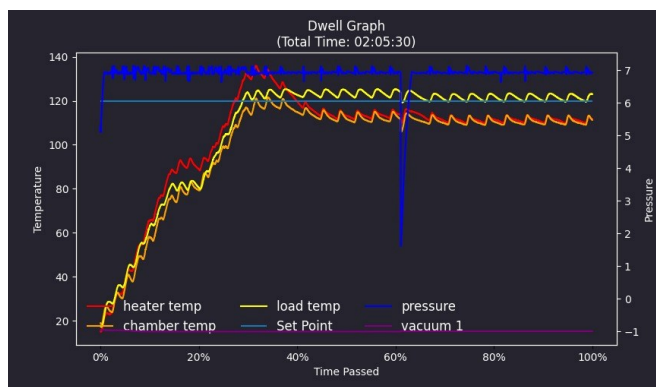
Introducing the all new Rodwell Dwell280 Composite Autoclave – a game changer for efficient composite processing.

The Rodwell Autoclave Company have been designing and manufacturing high-spec autoclaves since 1965 for the Bio-tech market. In 2012 Rodwell were approached by Dash C.A.E. to convert and modify an existing 2.6 bar autoclave for composite processing. That original prototype is still operating successfully to this day.

Consequently Rodwell and Dash C.A.E have developed the most cost effective Composite Autoclave by respective industry experts in Autoclave Design & Manufacture, and Composite Design & Process.

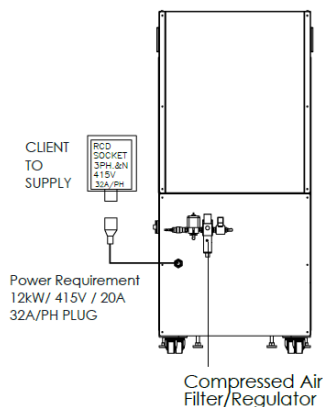
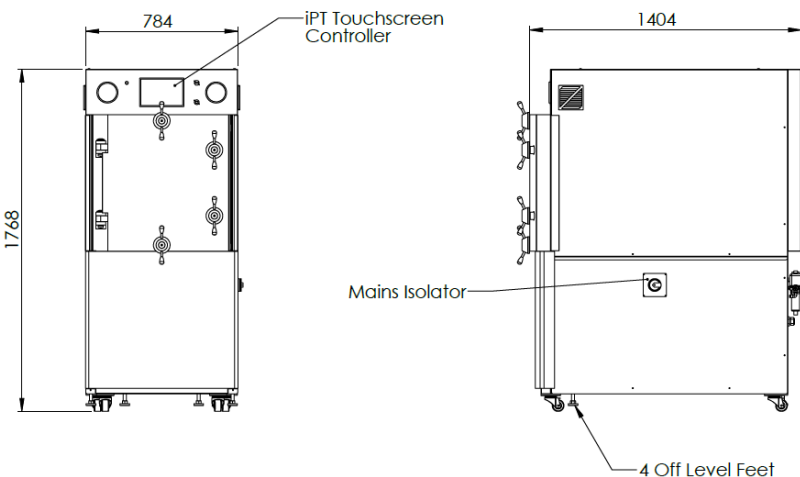
Optimum capacity to suit most composite processors for use as a lead or secondary autoclave. Simple enough to take the fuss out of autoclaving, Yet suitable specification for 95% of composite applications. Fully supported by an established after sales service network.

SmartLog Datalogging



Site Requirements		
Model	Dwell 280	(with compressor)
Power	9 KW	12 KW
Phase Requirements	3 Ph E	3 Ph E
Voltage	380/415 volt	380/415 volt
Compressed Air Pressure	7.5 bar	Included
Compressed Air Fill	Can be throttled to suit	4cfm/ 1.9l/sec
Compressed Air When Full	4 cfm/ 1.9l/sec	
Protection Rating	16 amp	20 amp

Parameters		
Model	Dwell 280	
Max. Working Temperature	Up to 200 °C	
Max. Working Pressure	Up to 7.5 BAR	
Programmable Pre-Sets	5	
Dwell Range	Up to 720 minutes	
Heat Ramp Modes	Fast Mode // Slow Mode	
Heat Ramp Rates	0–5 °C/min	
Vacuum	Near Absolute	



ISO 9001: 2015 Registered

